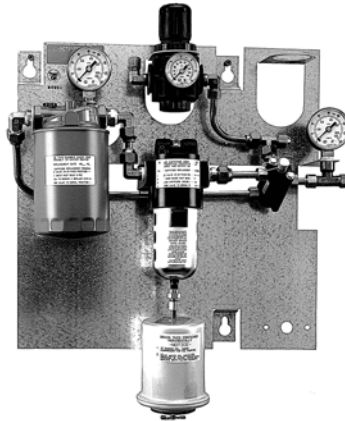


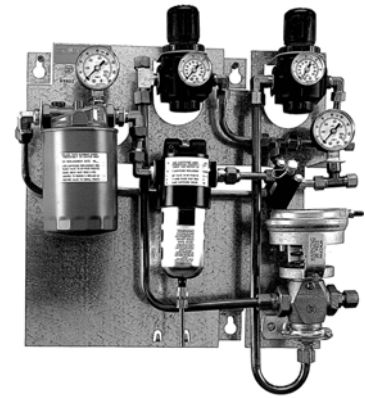
## A-4000 Series Oil Removal and Pressure Reducing Stations & Air Compressor Accessories

### Oil Removal and Pressure Reducing Stations

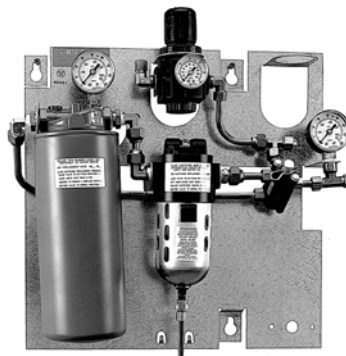
The A-4000 Series Oil Removal and Pressure Reducing Stations (see Figs. 1 through 4) are available in single or dual PRV models in 10 or 20 SCFM (4.7 or 9.4 L/s) maximum flow capacities. In addition, each unit features a four-way bypass valve, coalescing and activated charcoal oil removing filters, and is completely piped with copper tubing which reduces friction, allows higher flow rates, and meets fire codes in mechanical equipment rooms. The filter combination removes both oil aerosols and vapors to provide clean, oil free air for pneumatic control systems. All models provide maximum performance for a period of one year at which time the coalescing and activated charcoal filter elements will need to be replaced. Gauges are provided to monitor system operations and performance. All models can provide filtered, high pressure air to remote PRV stations. All models have a maximum input pressure rating of 150 PSIG (1050 kPa) and an upper temperature limit of 120°F (52°C). **Note: The air supply to these stations must be from a properly broken in air compressor producing less than 6 ppm aerosol oil (as measured by a Johnson Controls A-4000-120 Oil Indicator on the compressor tank outlet) and must also pass through a properly operating air dryer.**



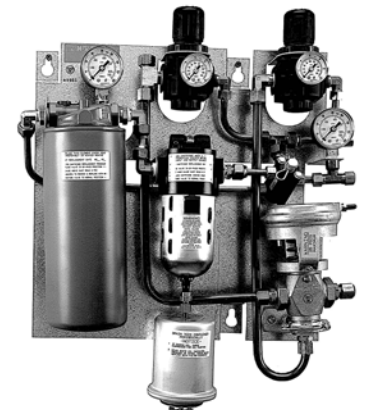
**Fig. 1: A-4000-139**  
10 SCFM, Single PRV Station  
(Shown with Optional Oil Reservoir)



**Fig. 2: A-4000-140**  
10 SCFM, Dual PRV Station



**Fig. 3: A-4000-141**  
20 SCFM, Single PRV Station



**Fig. 4: A-4000-142**  
20 SCFM, Dual PRV Station  
(Shown with Optional Oil Reservoir)

Single PRV models are factory set for approximately 20 PSIG (140 kPa) and dual PRV models are factory set for approximately 15 and 20 PSIG (105 and 140 kPa). Dual 10 SCFM units have a maximum of 1 PSI (7 kPa) pressure drop with a 10 SCFM flow from the PRVs through the three-way air valve; dual 20 SCFM units have a maximum of 2 PSI (14 kPa) pressure drop. The three-way air valve is equipped with a 1/2 in. O.D. compression fitting to furnish the dual supply air to the system. A 1/2 in. connection is furnished to provide a constant 20 PSIG (140 kPa) supply to local control panels and a 3/8 in. connection is furnished to provide filtered high pressure air to remote PRV stations.

**Note: All A-4000 Series Oil Removal and Pressure Reducing Stations are shipped from the factory with the activated charcoal filter packaged separately in the carton. The filter must be reinstalled by screwing it onto the threaded pipe of the filter head. Tighten the filter to the point where the white label faces the front of the unit.**

**Table 1: Models**

Flow Consumption*	Compressor Horsepower (50% Running Time)	PRVs	Code Number
Up to a Maximum of 10 SCFM (4.7 L/s)	Johnson Controls 7-1/2 hp and Under	Single	A-4000-139
		Dual	A-4000-140
10 to 20 SCFM Maximum (4.7 to 9.4 L/s)	Other Manufacturers 7-1/2 hp and Over	Single	A-4000-141
		Dual	A-4000-142

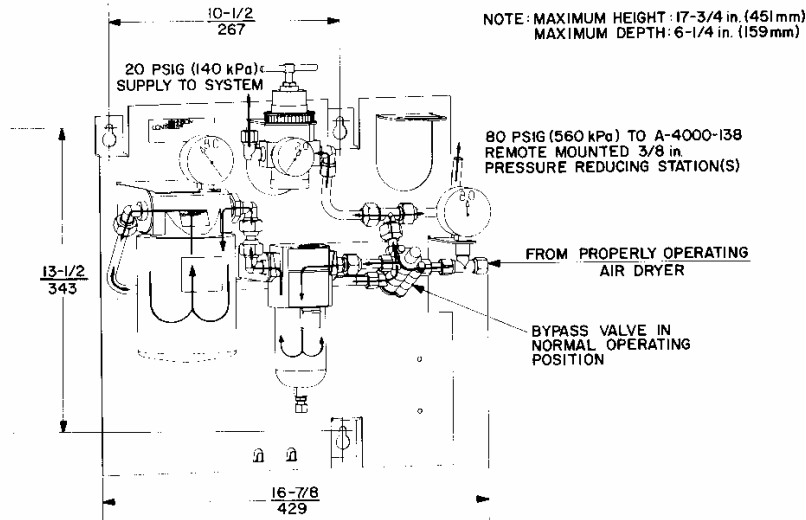
\* **Warning: If system air flow consumption increases beyond the maximum flow listed, oil will be forced through the coalescing filter and saturate the activated charcoal filter before its required replacement time.**

**Table 2: Repair Parts**

Description	Code No.
Charcoal Filter Elements:	
10 SCFM (4.7 L/s)	A-4000-632
20 SCFM (9.4 L/s)	A-4000-633
Coalescing Filter Elements:	
10 SCFM (4.7 L/s)	A-4110-604
20 SCFM (9.4 L/s)	A-4000-604
3/8 in. Pressure Regulator with Bracket, Gage, and Safety Relief Valve	A-4000-138
Four-Way Bypass Valve with 3/8 in. Compression Fittings	A-4110-601

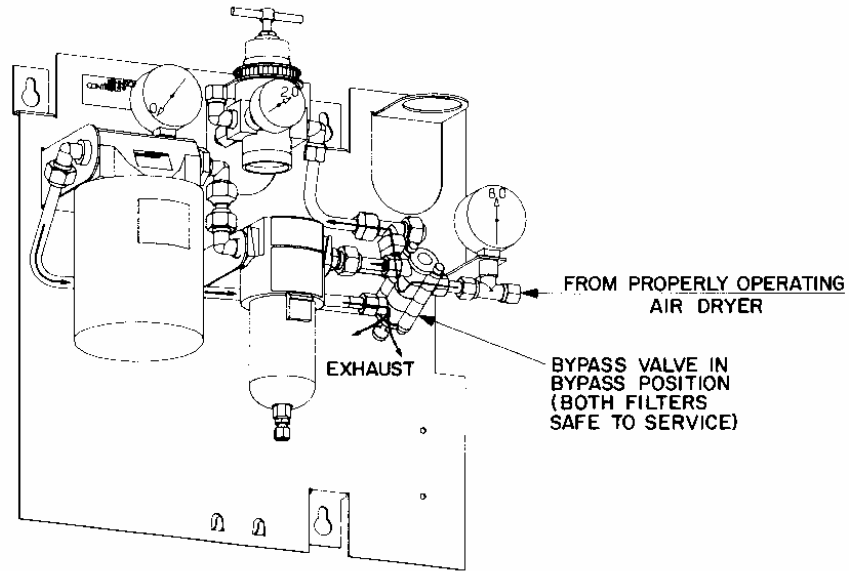


**Fig. 5: A-4110-601 Four-Way Bypass Valve**

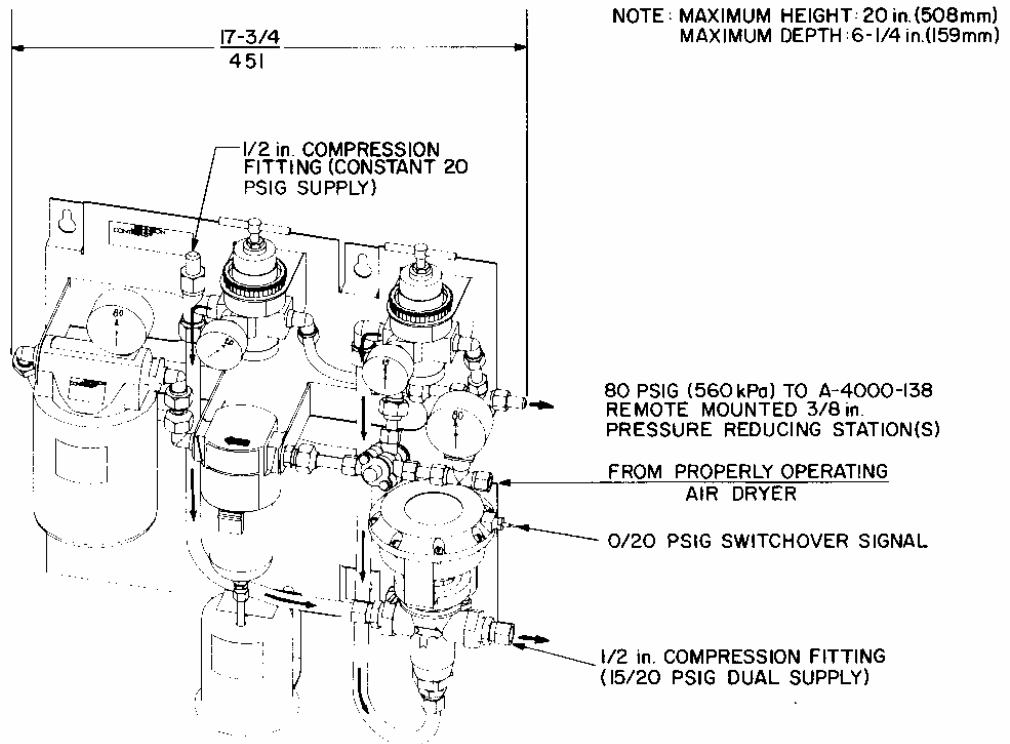


**Fig. 6: Flow Path with Bypass Valve in Normal Operating Position (Applies to All Models)**

Dimensions  $\frac{\text{in.}}{\text{mm}}$



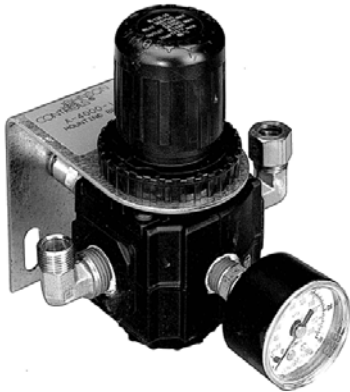
**Fig. 7: Flow Path with Bypass Valve in Bypass Position (Applies to All Models)**



**Fig. 8: Flow Path Through Three-Way Air Valve on Dual Oil Removal and Pressure Reducing Stations (Shown with Optional Oil Reservoir)**

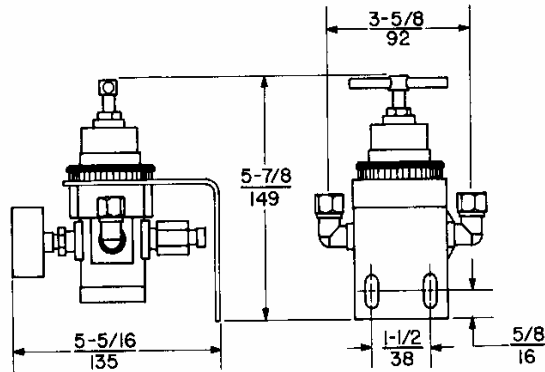
Dimensions  $\frac{\text{in.}}{\text{mm}}$

## Remote Mounted 3/8 in. Pressure Reducing Station



**Fig. 9: A-4000-138 Remote Mounted 3/8 in. Pressure Reducing Station**

The A-4000-138 Remote Mounted 3/8 in. Pressure Reducing Station (see Fig. 9) comes completely assembled with a wall mounting bracket, 0 to 30 PSIG gauge, safety relief valve, and 3/8 in. O.D. compression elbow fittings on the high and low pressure sides. The desired output pressure can be easily adjusted between 0 and 30 PSIG using the black knob. The factory set safety relief valve relieves overpressures exceeding 25 PSIG (175 kPa). Pressure adjustments up to 50 PSIG (350 kPa) can be made; however, the 0 to 30 PSIG gauge must be replaced with one having a higher scale and the safety relief valve must be readjusted to the required higher value. Designed to handle input pressures up to 300 PSIG (2100 kPa) at air flows in excess of 20 SCFM (9.4 L/s), this pressure reducing station regulated an output pressure within a 0.2 PSI (1.4 kPa) variation with a 20 PSI (140 kPa) variation in input pressure.



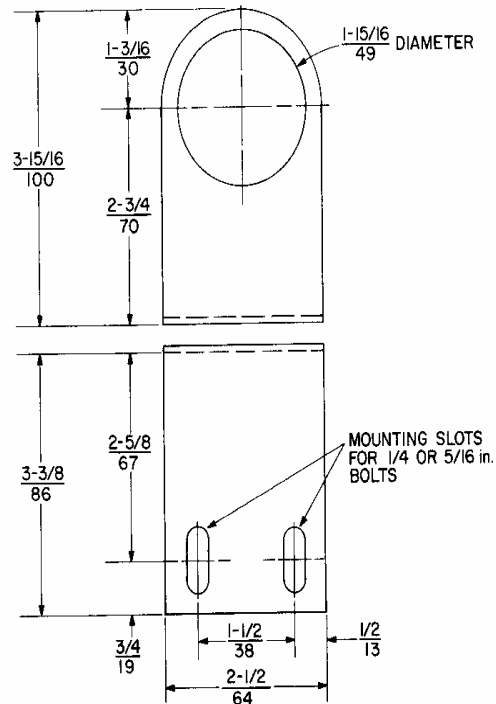
**Fig. 10: A-4000-138 Dimensions  $\frac{\text{in.}}{\text{mm}}$**

**Table 3: Repair Parts**

Description	Code No.
1/4 in. NPT, 25 PSIG Safety Relief Valve (Not ASME Coded)	A-4000-144
Replacement Bracket	A-4000-143



**Fig. 11: A-4000-144 Safety Relief Valve**



**Fig. 12: A-4000-143 Mounting Bracket Dimensions  $\frac{\text{in.}}{\text{mm}}$**



**Table 5: Repair Parts**

Description	Code No.
<b>Coalescing Filter Elements</b>	
10 SCFM (4.7 L/s)	A-4110-604
20 SCFM (9.4 L/s)	A-4000-604
40 SCFM (18.9 L/s)	A-4000-605
<b>Charcoal Filter Elements</b>	
10 SCFM (4.7 L/s)	A-4000-632
20 SCFM (9.4 L/s)	A-4000-633
<b>Filter Auto-Drain Kit (All Coalescing Filters)</b>	A-4000-6010

**Servicing Procedure for Coalescing Filters**

All coalescing filters are equipped with an automatic drain from which accumulations of entrapped liquids are automatically blown out. The filter element should be replaced when the leaving air pressure gauge (mounted on the PRV station charcoal filter head) indicates less than 50 PSIG (350 kPa) the differential pressure between the leaving and input gauges is 15 PSI (105 kPa) or more, or after one year of service - whichever occurs first.

To replace the filter element, refer to Fig. 17 and proceed as follows:

1. Turn the air supply OFF.
2. Depress the lever on the filter bowl clamp and turn 1/8 of a revolution. Drop the clamp, bowl guard, and bowl to expose the filter element which needs to be replaced.
3. Remove the old filter element by turning it counterclockwise.
4. Clean the small screen around the drain seat of the automatic drain valve by turning the filter bowl upside down and tapping it lightly on a table top.
5. Clean the bowl and drain valve assembly using household detergent or any solvent that is not harmful to polycarbonate.
6. Install the new filter element and bowl O-ring, then reinstall the bowl and guard.



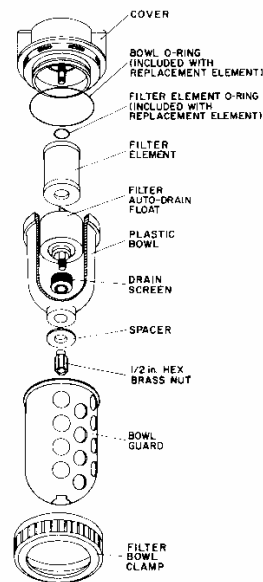
**A-4110-604 (10 SCFM)      A-4000-604 (20 SCFM)      A-4000-605 (40 SCFM)**

**Fig. 15: Coalescing Filter Elements**



**A-4000-633 (20 SCFM)      A-4000-632 (10 SCFM)**

**Fig. 16: Charcoal Filter Elements**



**Fig. 17: Coalescing Filter Disassembly**

### Servicing Procedure for Activated Charcoal Filter

Refer to the white service label on the activated charcoal filter element for proper replacement procedure.

**Note:** After the activated charcoal filter element has been replaced, apply the white service label included and record the next replacement date (month and year).

### A-4000-6010 Filter Auto-Drain Replacement (see Fig. 18)



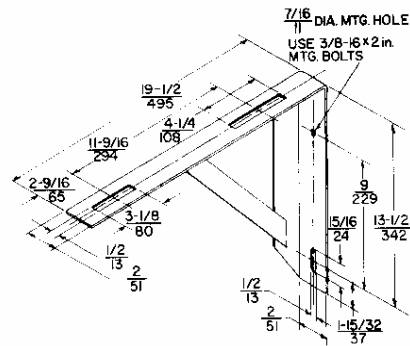
**Fig. 18: A-4000-6010 Filter Auto-Drain Assembly**

Release the pressure in the system and remove the bowl guard and the plastic bowl. Insert a 7/64 in. Allen wrench up through the bottom of the external 1/2 in. hex brass nut to prevent the float assembly from turning when loosening the 1/2 in. hex brass nut to remove the old auto-drain assembly.

Install the replacement auto-drain assembly. Turn the hex brass nut finger-tight while restraining the float assembly from turning by holding it with the 7/64 in. Allen wrench.

**CAUTION:** While tightening the 1/2 in. hex nut, it is important not to hold the float assembly. Holding the float assembly may cause the float arm to twist, resulting in a malfunctioning of the auto-drain.

### Wall Bracket for Small, Horizontal, Single Compressors and Tanks



**Fig. 19: A-4000-108 Wall Bracket (1/8 in. Plate Metal)**

Dimensions  $\frac{\text{in.}}{\text{mm}}$

Rugged 1/8 in. A-4000-108 Angle Iron Brackets (see Fig. 19) may be used to mount a compressor on a wall where floor space is limited. These brackets may be used for single compressors with up to 30 gallon tanks.

### Floor Legs for Horizontal Tanks



**Fig. 20: A-4000-109 Floor Leg**

A-4000-109 Floor Legs (made from U-channel, see Fig. 20) for mounting horizontal tanks 12 in. off the floor are available to meet building requirements and facilitate cleaning under the compressor.

## Drain Cock



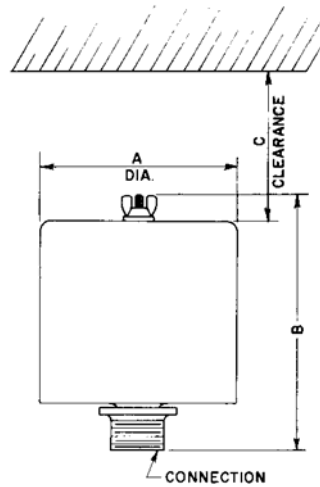
**Fig. 23: Drain Cock**

The 1/8 in. NPT A-4000-118 Drain Cock (see Fig. 23) is available as a repair part for installation in air tanks for draining condensation. Use the 1/8 in. model for 10 gallon tanks and the 1/4 in. model for 15 and 30 gallon tanks. The 1/8 in. model is also the replacement drain cock for the A-4000-145 Oil Reservoir.



**Fig. 24: Intake Air Filters**

The dry-type intake air filters (see Fig. 24) are rated 99% efficient at a 10 micron rating, regardless of air demands or temperature variations. A steel housing with baked enamel finish makes these filters suitable for either outside or inside locations. Replaceable cartridges provide for simple maintenance.



**Fig. 25: Dimensions (in./mm)  
(See Table 6.)**

## Intake Air Filter

**Table 6: Dimensions**

Code No.	Capacity	Connection	Dimensions, in. (mm)		
			A	B	C
A-4000-155	5 SCFM (2 L/s)	½ in. NPT	2-1/2 (64)	3 (76)	2-7/8 (73)
A-4000-14	15 SCFM (5 L/s)	¾ in. NPT	6 (152)	4 (102)	4-1/4 (108)
A-4000-15	30 SCFM (14 L/s)	1-1/4 in. NPT	6 (152)	6-3/4 (172)	7 (178)